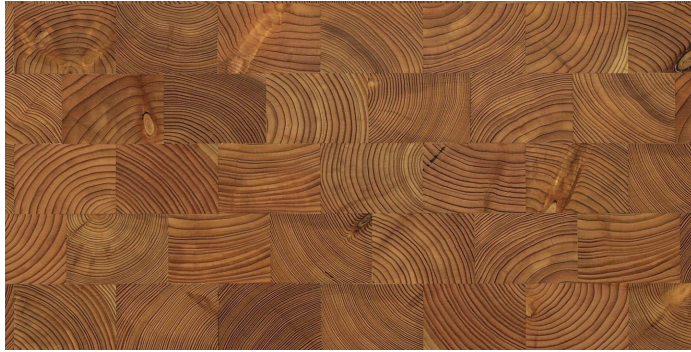


# Product Data Sheet

## End Grain Larch Blocks Premium



Should you require the information on any other details please contact the sales team on **020 8501 6730** or [info@wfa.uk.net](mailto:info@wfa.uk.net)

**MADE IN BRITAIN**



### Product Details

Product Description:	End Grain Blocks
Wood Species:	European Larch
Construction:	Solid
Product Type:	End Grain
Grade:	Premium
Total Thickness:	18mm*
Width:	68mm*
Length:	88mm*
Profile:	Square Edged Planed All Round
Finish:	Unfinished

### Technical Information

Country of Manufacture:	Europe
FSC®/PEFC:	On Request
Norm:	DIN 68702
Reaction to Fire:	EN 13501-1 Dfl-S2
Density:	480 - 540 kg/m <sup>3</sup>
Formaldehyde Emissions:	N/A
Warmth Conduction (approx):	Max 25mm – < 0,15m <sup>2</sup> /K/W
Production Tolerances;	
Width:	+/- 1.00mm
Thickness (Total):	+/- 1.00mm
Length:	+/- 1.00mm
90° Angle:	+/- 0.05°

- Produced in Europe • Look for our FSC®-certified products

\*Sizes are subject to availability and can differ from the above dimensions.

### Grading

Maximum Size of Sound Knots:	No Maximum
Open Knots:	Not Allowed
Cracks:	Open Cracks up to 1mm Allowed
Sap Wood:	Not Allowed
Colour Variation:	Natural Variation Allowed
Grain Variation:	Mixture of Natural Grain and Knots

### Installation

Installation Method:                      Glued    Nailed    Floated on Underlay

*Please also refer to our guidelines.*                      ✓

**Over Underfloor Heating:** When glued to an appropriate subfloor this product is suitable for use with water systems. Floor probes must be installed to control and regulate the flooring temperature which must not exceed 27°C. We also highly recommend the installation of a data recording Fidbox which measures and logs the temperature and humidity levels, see the data sheet for more information or [www.floorprotector.at](http://www.floorprotector.at) (Minimal shrinkage can occur)

**Site Conditions:** 45 – 65% relative humidity & 15 – 25°C room temperature.

### Maintenance Advice

To fully aid in the care of the floor it is advised that all precautions are carried out. Avoid scratches by minimising grit and dust, install doorway entrance mats and apply felt pads to furniture. Use PH neutral cleaners and avoid soaking the floor with water at all times.

Recommended Products	Initial	Regular	Monthly	Long Term
Sweep / Vacuum:	✓	✓		

#### Oiled Finish

Osmo Wash and Care:		✓		
Osmo Maintenance Oil:				✓

#### Lacquered Finish

Bona Cleaner:		✓		
Bona Refresher:				✓

**Guarantee:** 25 years; The lifetime of our guarantee covers the structural integrity of the product being the lamination, production, dimensions and grading. Please see our guarantee sheet for full details.